

Transformation from Generation B to MOVI-C®



Introducing the new **MOVI-C®** modular automation system

Goodbye complexity. Hello MOVI-C®

Plan, connect, move – as easy as 1, 2, 3

With the MOVI-C® modular automation system, everything comes from a single source. Hardware and software designed to work seamlessly together.

The Next Evolution in Automation

The MOVI-C® automation system builds on the proven strengths of our existing solutions, while introducing a powerful new generation of capabilities, designed to meet the demands of present and future industrial automation needs. This advanced, unified platform is set to progressively replace our current inverter, control, and engineering software products, offering a streamlined and future-ready automation environment.

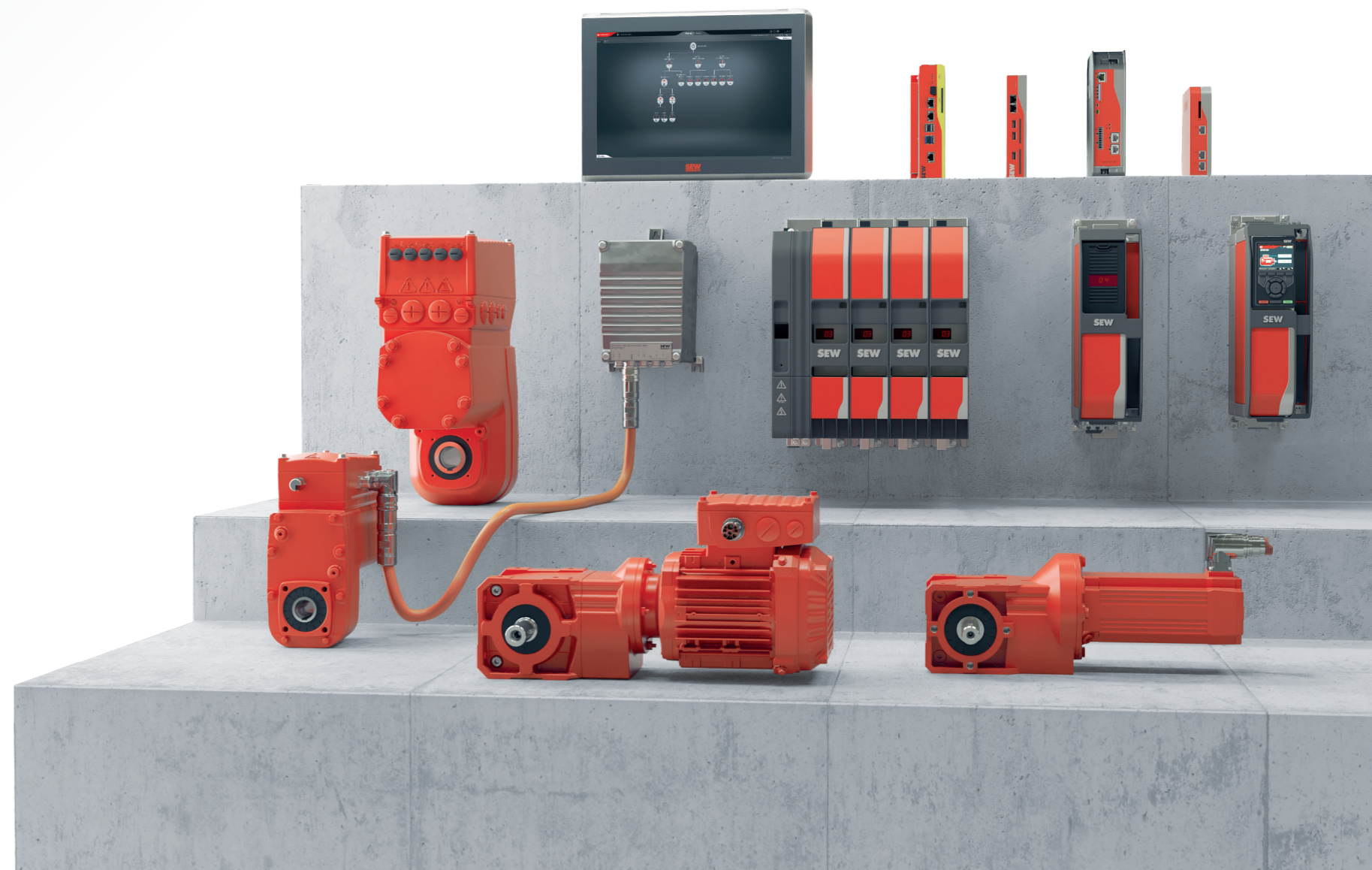
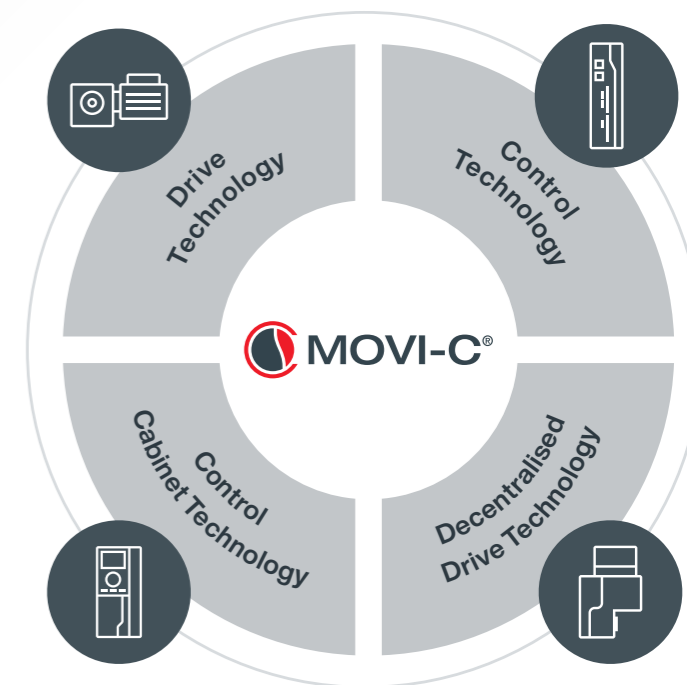
With its modular design and seamless integration across both control cabinet and decentralised architectures, MOVI-C® simplifies your entire automation landscape. Its flexibility and technical advancements make MOVI-C® a powerful successor to Generation B models, ensuring a smooth transition while delivering a significant boost in performance and efficiency.

Transformation from Generation B to MOVI-C®

This overview provides a general guide to MOVI-C® equivalents. For the best results, we strongly recommend consulting your local SEW-EURODRIVE sales or engineering expert.

They will work with you to identify the ideal solution for your application, tailored to your specific requirements and engineered to deliver maximum return on investment.

Find your nearest SEW-EURODRIVE office on the last page and move forward with confidence, powered by MOVI-C®.



Control Cabinet Drive Technology

Generation B

MOVI-C®

Generation B phase out timeline

Product Line	Type	End Of Sales	End Of Aimed Service
MOVIAXIS®	MXP, MXR, MXA, MXM, MXC, MXB, MXS, MXZ	31/12/2025	31/12/2030
MOVIDRIVE® B	MDX 60/61B	31/12/2026	31/12/2031
MOVITRAC® B	MC 07B	31/12/2026	31/12/2031
MOVI-PLC®	DHR, DHE, DHF	31/12/2026	31/12/2031



MOVIAXIS®
Multi-axis servo inverter



MOVIDRIVE® modular
Multi-axis servo inverter



MOVIDRIVE® system
Single-axis application inverter (requires controller)



MOVIDRIVE® B
Single-axis application inverter



MOVIDRIVE® technology
Single-axis application inverter



MOVITRAC® advanced
Single-axis standard inverter



MOVITRAC® B
Single-axis standard inverter



MOVITRAC® classic
Single-axis standard inverter



MOVI-PLC® (DHx)



MOVI-C® controllers (UHX)

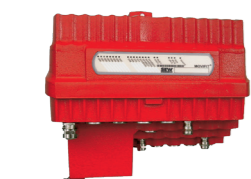


Decentralised Drive Technology

Generation B

MOVI-C®

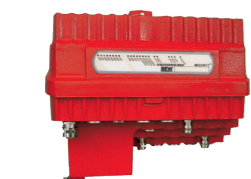
Generation B phase out timeline



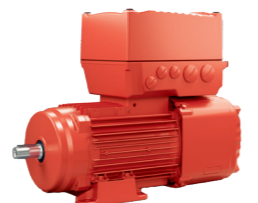
MOVIFIT® FC
Decentralised inverter



MOVIMOT® flexible
Decentralised inverter



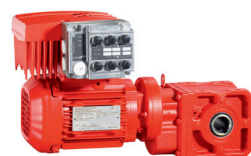
MOVIFIT® MC
Distributor for MOVIMOT® gearmotors



MOVIMOT® advanced
Gearmotor with integrated inverter



Field Distributors
Decentralised fieldbus /inverter



MOVIMOT® D
Gearmotor with integrated inverter



MOVIGEAR® performance /classic
Mechatronic drive system



MOVIGEAR® B / DSM
Mechatronic drive system



DRC®
Mechatronic drive system



MOVIMOT® performance
Mechatronic drive system

Product Line	Type	End Of Sales	End Of Aimed Service
MOVIFIT® MTF (FC)	DeviceNet classic, CAN/SBus slave, PROFIBUS classic	31/12/2025	31/12/2030
MOVIFIT® MTF (FC)	PROFINET, Ethernet/IP, Modbus TCP	31/12/2026	31/12/2030
MOVIFIT® MTM (MC)	CAN/Sbus slave, DeviceNet, PROFIBUS classic	31/12/2025	31/12/2030
MOVIFIT® MTM (MC)	PROFINET, Ethernet/IP, Modbus TCP	31/12/2026	31/12/2030
MOVIFIT® MTC (FDC)	-	31/12/2025	31/12/2030
MOVIMOT® D	Binary, MLK30A, MLK31A, MLK32A	31/12/2028	31/12/2033
Field distributors	Z1, Z3, Z6, Z7, Z8	31/12/2026	31/12/2030
Field distributors	Z9	31/12/2025	31/12/2030
Fieldbus interfaces	PROFIBUS, PROFINET, EtherNet/IP, EtherCAT, InterBus, DeviceNet	31/12/2026	31/12/2030
MOVIGEAR® B	DSM, DBC, DAC, DSC, SNI	31/12/2025	31/12/2030
DRC..-A	DBC, DAC, DSC, SNI	31/12/2025	31/12/2030



Servo Drive Technology

Generation B

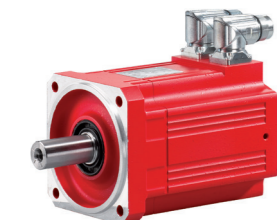
MOVI-C®



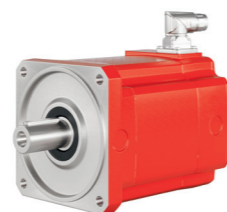
CM
Synchronous servo motor
Medium inertia line
(1st generation)



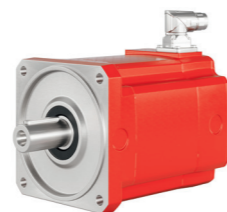
CMPZ
Synchronous servo motor
Medium inertia line
(2nd generation)



CMP
Synchronous servo motor
High dynamic line
(2nd generation)



CM3C
Synchronous servo motor
Medium inertia line
(3rd generation)

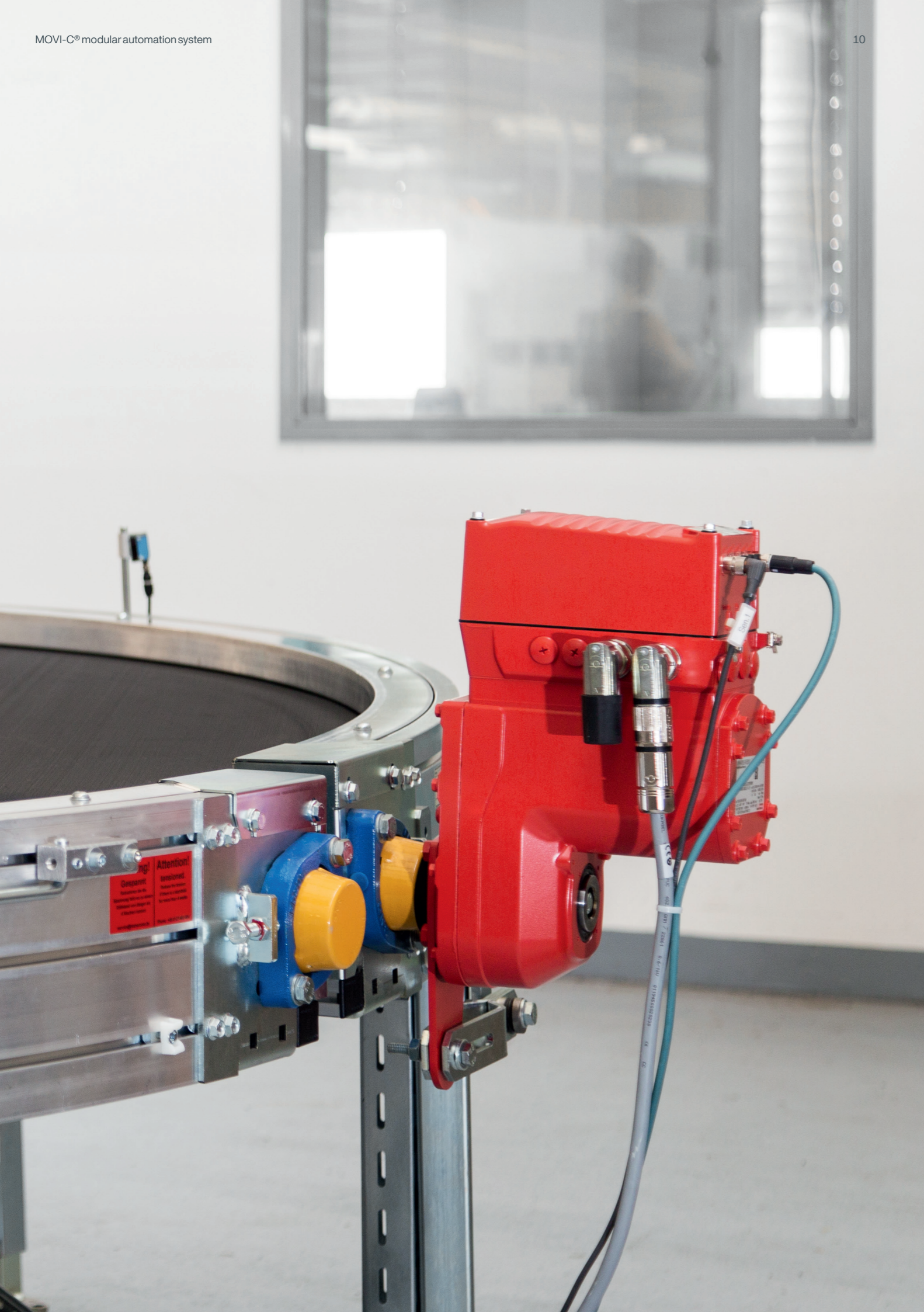


CM3P
Synchronous servo motor
High dynamic line
(3rd generation)

Generation B phase out timeline

Product Line	Type	End Of Sales	End Of Aimed Service
CM	71-90	31/07/2025	31/07/2035
CM	112	-	-
CMPZ	71-100	31/07/2025	31/07/2035
CMP	40-112	-	-





Contact Us

Our dedicated sales team services all regions of Australia extending from major cities to rural, regional, and remote areas, including the Northern Territory and Tasmania.



Location	Department	Email	Contact Number
Melbourne	Sales	sales.vic@sew-eurodrive.com.au	+61 3 9933 1000
	Engineering	eng.applications.vic@sew-eurodrive.com.au	
Sydney	Sales	sales.nsw@sew-eurodrive.com.au	+61 2 9725 9900
	Engineering	eng.applications.nsw@sew-eurodrive.com.au	
Brisbane	Sales	sales.qld@sew-eurodrive.com.au	+61 7 3276 5100
	Engineering	eng.applications.qld@sew-eurodrive.com.au	
Adelaide	Sales	sales.sa@sew-eurodrive.com.au	+61 8 8161 4000
	Engineering	eng.applications.sa@sew-eurodrive.com.au	
Perth	Sales	sales.wa@sew-eurodrive.com.au	+61 8 9251 4900
	Engineering	eng.applications.wa@sew-eurodrive.com.au	



Company Background

The SEW-EURODRIVE group is a global designer and developer of mechatronic transmission systems and motor control electronics, headquartered in Bruchsal, Germany. Its broad spectrum of integrated solutions includes geared motors and gear units, high torque industrial gear units, high-efficiency motors, electronic frequency inverters and servo drive systems, decentralised drive systems, plus engineered solutions and technical support/training.

The Australian division of SEW-EURODRIVE is headquartered in Melbourne and is supported by a network of sales and service facilities in Sydney, Brisbane, Mackay, Perth, Adelaide and Newcastle. The company's customer base includes large-scale corporations and smaller entrepreneurial enterprises across Australia.

Technical Enquiries

SEW-EURODRIVE Pty Ltd
27 Beverage Drive
(PO Box 59)
Tullamarine, VIC 3043
Phone: (03) 9933 1000
general.mail@sew-eurodrive.com.au

Service and Support
Emergency Contact
Phone: 1300 363 432

Media Enquiries

SEW-EURODRIVE Pty Ltd
27 Beverage Drive
(PO Box 59)
Tullamarine, VIC 3043
Phone: (03) 9933 1000
marketing.au@sew-eurodrive.com.au

Marketing Department
Phone: (03) 9933 1000
marketing.au@sew-eurodrive.com.au

SEW-EURODRIVE Pty Ltd

27 Beverage Drive
(PO Box 59)
Tullamarine, VIC 3043
Phone: (03) 9933 1000
general.mail@sew-eurodrive.com.au