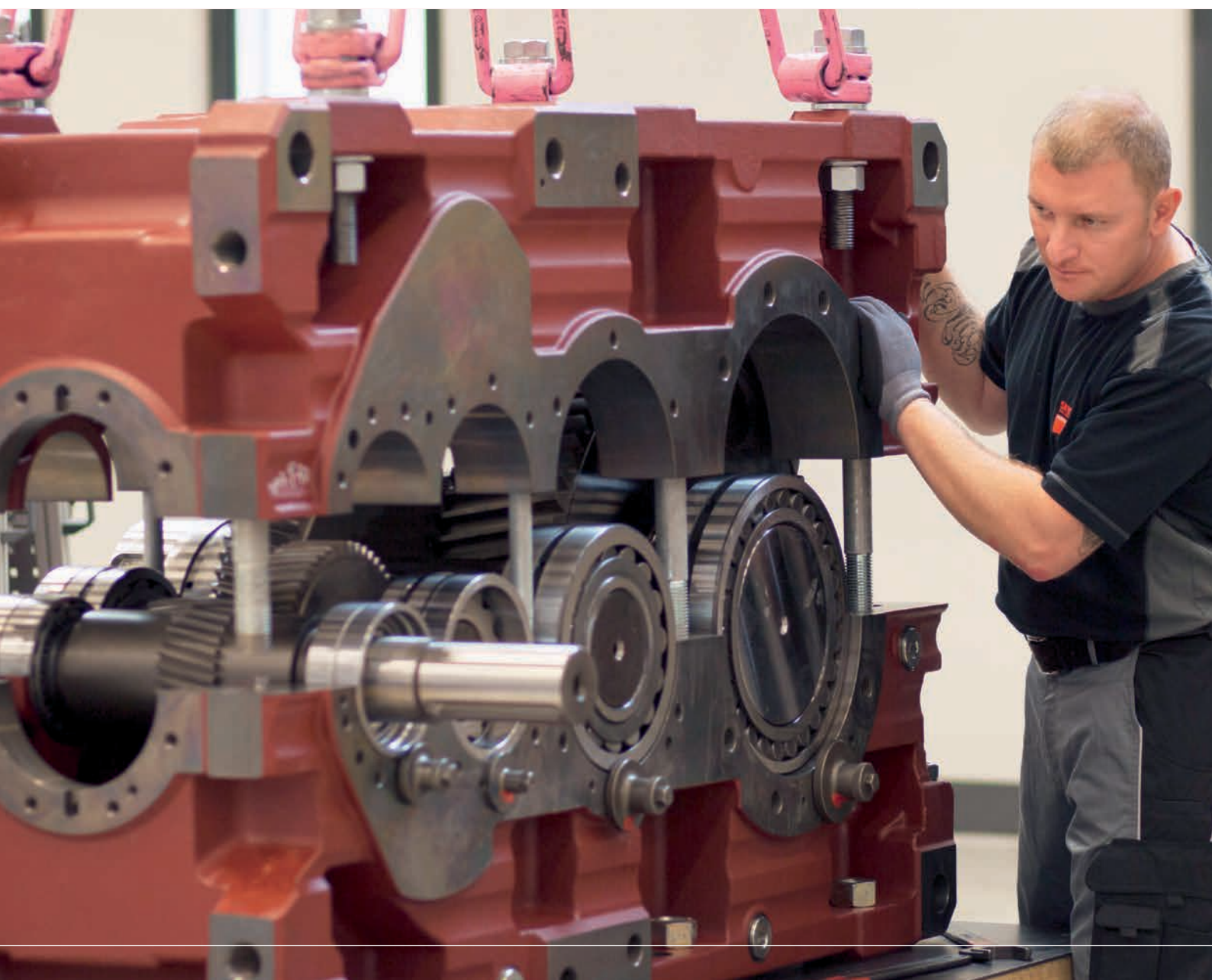


Industrial Gear Unit Service from Mackay



Industrial Gear Unit Service from Mackay

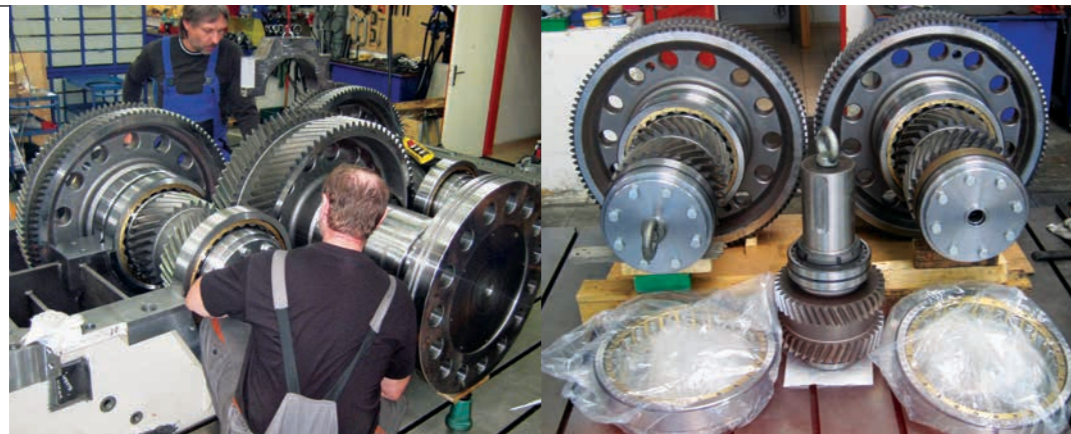
SEW-EURODRIVE offers a comprehensive service portfolio for industrial gears from Mackay, so why not take advantage of the technical expertise of a global player with a strong local presence in Mackay and surrounding areas to ensure reliability of your operations and processes.

Our product specialists will gladly provide assistance from repair of SEW products, all the way to repairing or replacing aging non-SEW units with energy efficient, modern and space saving 'drop in' replacements.

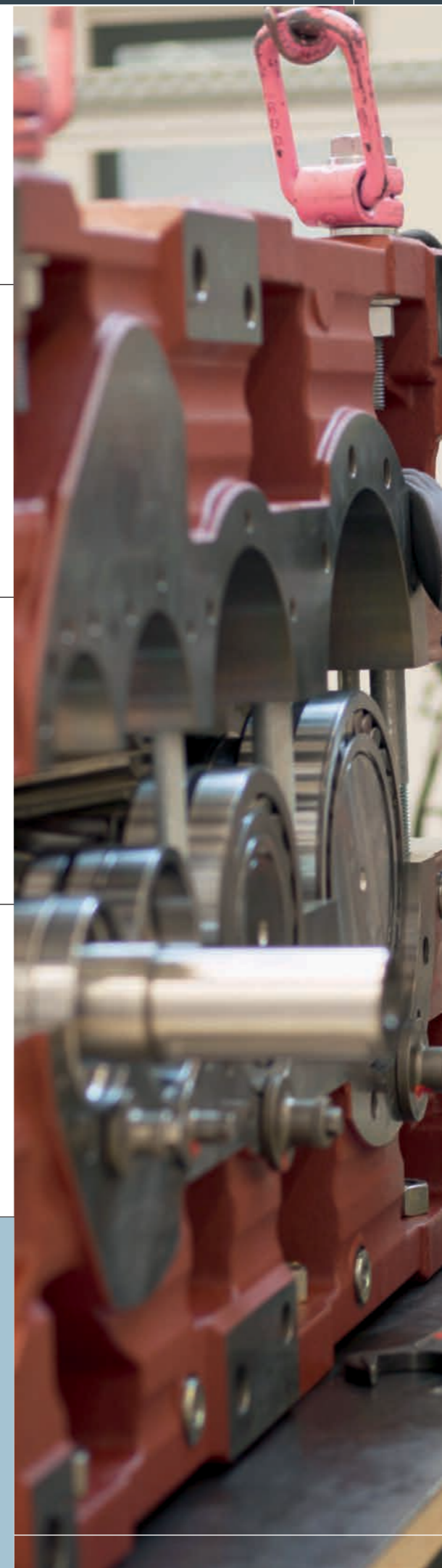
The 2000sqm Service Centre, opening in March 2017, will allow SEW-EURODRIVE to better support customers in Mackay and surrounding areas.

Your advantages:

- Complete industrial gear unit service, engineering support and expertise from one source
- Close proximity to customers in Mackay and surrounding areas – 'world class OEM at your doorstep'
- Delivery and repair program for gearboxes, comprising couplings, oil coolers, sensors, motors and more
- A complete tailored drive solution to meet individual needs and requirements
- Comprehensive parts and labour warranty
- Prevention of unscheduled downtime and standstills in operation
- High availability of spare parts – in excess of \$20 million inventory held in Australia
- Cost and time savings thanks to professional repairs, overhaul and modification
- Professional service equipment at the new state-of-the-art facility



Gear replacement with state-of-the-art gear technology.



Industrial Gear Unit Service from Mackay

What we offer:

- Full load testing up to 500kW of power and up to 600,000 Nm torque
- Load testing of gearbox only or complete drive assembly, foot mounted or shaft mounted
- You can witness load / spin testing and can inspect the gearbox during the strip and inspect process
- VA and FFT vibration spectrum to guarantee no bearing/gear/shaft defect
- Temperature logging as well as thermal imaging to evaluate gearbox thermal performance
- Measure noise and check compliance with noise requirements
- Spin test or partial load test up to 1.5 MW
- Testing of low and medium voltage motors up to 6.6 kV
- Gear replacement with state-of-the-art gear technology

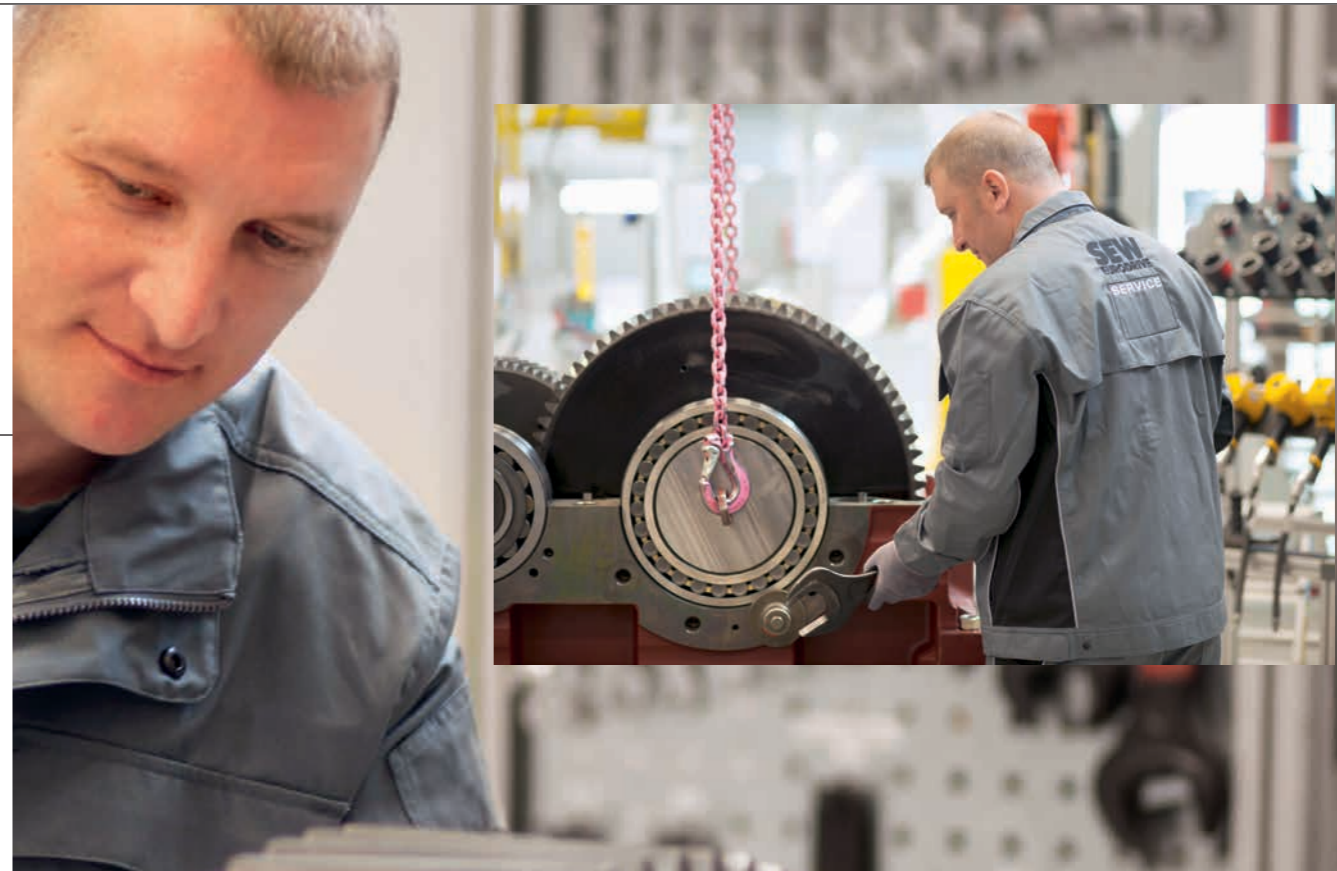
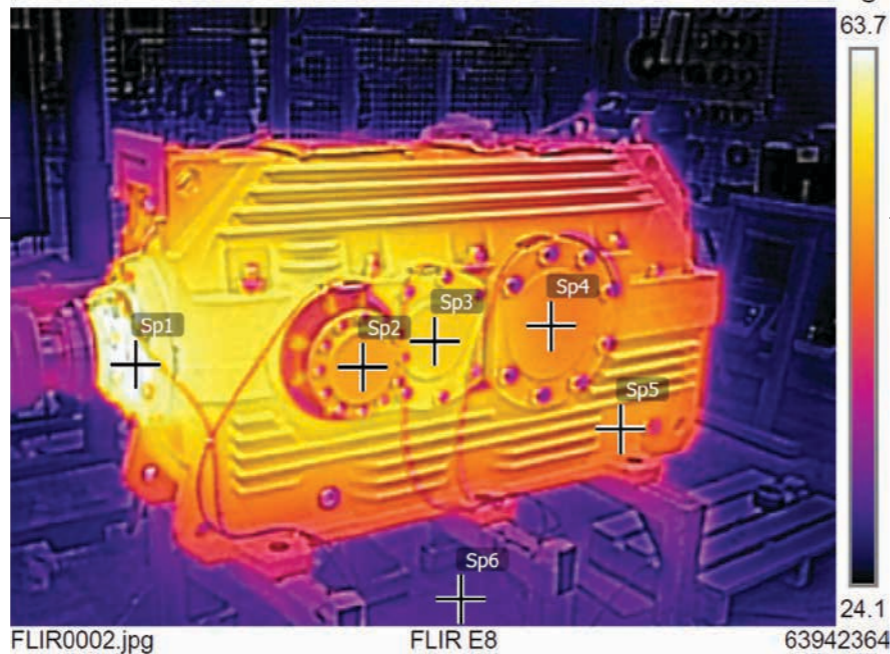
SEW-EURODRIVE qualified engineers will guide you through possible options to find the best solution for your needs:

1. Repair of the existing drive
2. Replacement of gear pairs (no "reverse engineering") – with the latest gear technology
3. Adapt a standard SEW-EURODRIVE gearbox to take advantage of our extensive stock holding and quick turn-around times
4. Design a purpose built unit

Temperature logging as well as thermal imaging to evaluate gearbox thermal performance.

Measurements	°C
Sp1	63.8
Sp2	50.2
Sp3	53.7
Sp4	48.4
Sp5	49.0
Sp6	27.3

Parameters	
Emissivity	0.95
Refl. temp.	20 °C



Industrial Gear Unit Service from Mackay

Workshop facilities:

- Clean factory concept – no machining in gearbox service centre
- Up to 40T crane capacity
- Videoscope for inspection of hard to reach places inside gearboxes
- Anemometer for assessment of cooling fan performance

Load testing available:

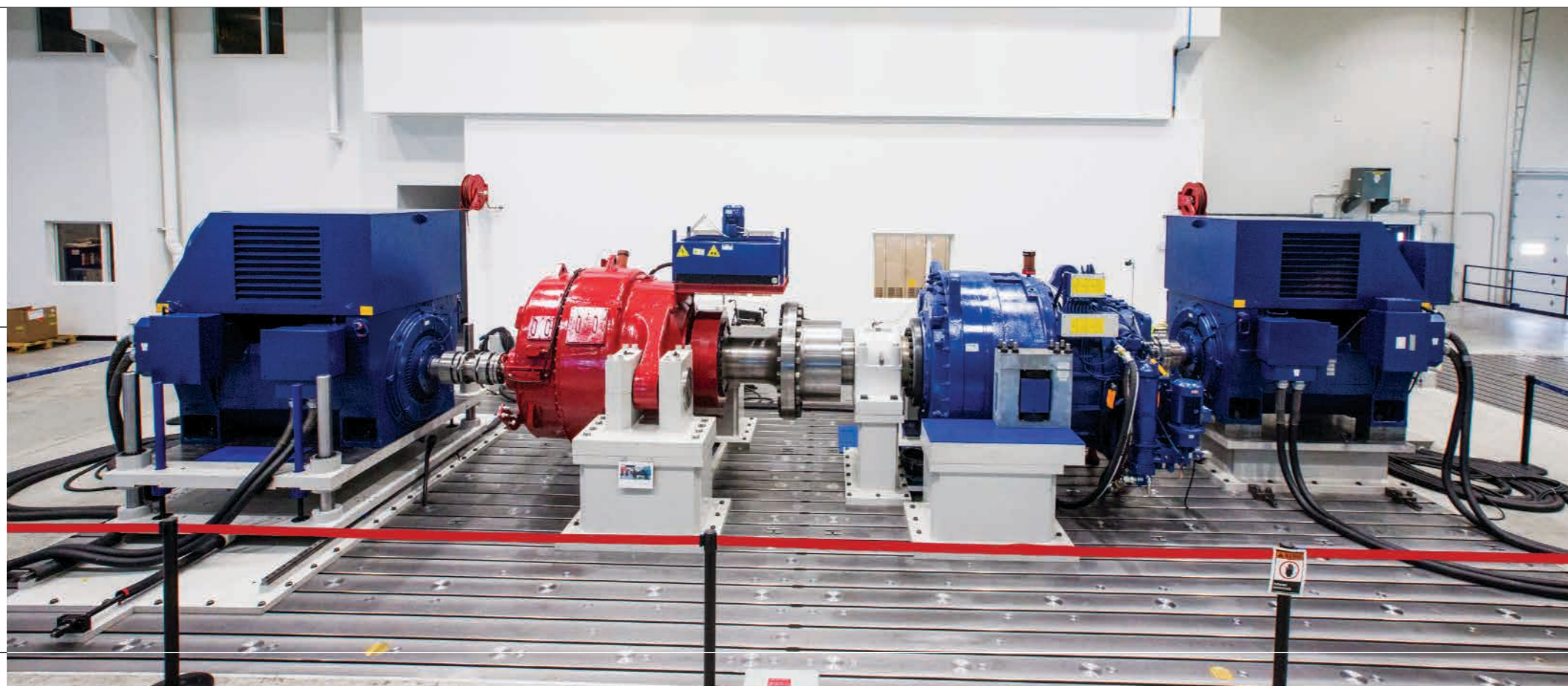
Believing that load testing a gearbox and / or drive will ensure that potential problems are identified before the unit goes back into service, SEW-EURODRIVE implemented a state-of-the-art load testing system in Mackay.

SEW-EURODRIVE will conduct a number of tests to determine the condition of the gearbox during the load testing phase. The load test will load the bearings and gearing avoiding gear mesh backlash that

affects vibration analysis, ensuring FFT readings will identify any potential bearing, gear, or shaft defect. Loaded gear tooth patterns will detect potential misalignment including misalignment caused by load, speed or temperature. A test protocol will be provided for each performed test and will remain both with the gearbox documentation and also stored electronically for evaluation later on. Load testing allows measuring noise and checking compliance with noise requirements.

Your advantages:

- Load testing up to 500 kW power and up to 600,000 Nm torque available
- Spin test or partial load test up to 1.5 MW available
- SEW-EURODRIVE is also able to load test the entire gearbox, motor and swing-base assembly. This can be done as a shaft mounted assembly, which closely replicates site mounting.
- You can witness load / spin testing and can inspect the gearbox during the strip and inspect process



SEW-EURODRIVE is right here for you:

Version 2/2017



Melbourne (Head Office)

27 Beverage Drive
Tullamarine VIC 3043
Phone (03) 9933 1000
Fax (03) 9933 1003



Sydney

9 –11 Sleigh Place
Wetherill Park NSW 2164
Phone (02) 9725 9900
Fax (02) 9725 9905



Brisbane

34 Collinsvale Street
Rocklea QLD 4106
Phone (07) 3276 5100
Fax (07) 3276 5102



Perth

10 Colin Jamieson Drive
Welshpool WA 6106
Phone (08) 9251 4900
Fax (08) 9251 4903



Adelaide

9C Park Way
Mawson Lakes SA 5095
Phone (08) 8161 4000
Fax (08) 8161 4002



Mackay

9 –11 Silverton Court
Paget QLD 4740



Townsville

12 Leyland Street
Garbutt QLD 4814
Phone (07) 4779 4333
Fax (07) 4779 5333

