

SEW-EURODRIVE ITALIA

CORPORATE PRESENTATION

Driving the world



Our credo, since 1931:

**“People don’t want
products – they
want solutions.”**

Ernst Blicke

Son-in-law of the founder of SEW-EURODRIVE

Driving the world



SEW-EURODRIVE is a historic multinational German family-owned company which has been operating since 1931 all over the world in the field of industrial, logistics and process **automation**.



Our goal is to become the
BEST IN DIGITAL INTEGRATION

We work together with our ecosystem of partners to develop solutions that enable **full digitalization of the factory**.

Our identity

Driving the world
in a SEWstainable way

Be SEWstainable!

Advancing the industrial, social and economic ecosystem while protecting the environment and future generations.

We develop new **skills, services, sustainable solutions and advanced technologies** in the field of **industrial, logistics and process automation**.

<p>TECHNOLOGY</p> <p>Cutting-edge solutions and components to drive the digital transformation of the manufacturing industry.</p>	<p>SERVICES</p> <p>Consulting, support, service, project management, training, engineering, delivery</p>	<p>QUALITY</p> <p>Continuous improvement of processes, skills, services and technology for customized and durable solutions.</p>
--	---	---

Our values
Ethics - Sharing - Flexibility

A global “family company”

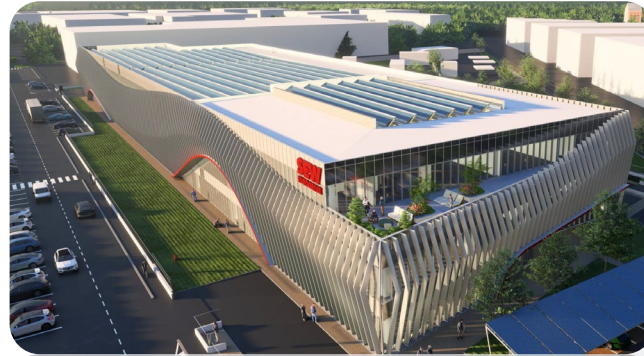


Think Global Act Local



The restyling and expansion in a "Lean" perspective of the Solaro headquarters was finalized. The **Smart Factory** represents the beating heart of the technological innovation by SEW-EURODRIVE.

Opening of the **new Drive Technology Center in Bologna**: a technological hub dedicated to companies, start-ups and Universities that will host an Assembly area, Service an R&D Center and a DriveAcademy®



SEW-EURODRIVE ITALIA

We have been present in Italy since 1968.

- The **Drive Technology Center in Solaro (MI)** hosts the Executive Offices, the central departments and the assembly workshop
- The **Drive Centers in Torino, Milano, Bologna, Verona, Caserta and the Sales Office in Pescara** ensure widespread assistance throughout the country.



2017

2023

2027

Opening of the new **Drive Center in Caserta**, with a Service Center and a DriveAcademy® for technical training.



People make the difference!



People make the difference. Together they drive the world.

We want to build a context of trust and growth of people, open to collaboration and teamwork, based on **shared values and common objectives**.

Our daily work is an essential and fundamental element to achieve not only personal goals, but also common targets for the success of our company.

In addition to a dynamic, open and engaging work environment, we offer customized programs for professional development at all **career** stages.

Governance Model



Our Governance model is designed to improve organizational performance, drive sustainable growth and create long-term value. We adhere to the highest standards of integrity and ethical conduct to build trust and credibility with our stakeholders.

- **CODE OF ETHICS**

The **responsibility to our employees, customers, suppliers and the community** involves compliance with applicable laws, adherence to core ethical values and commitment to SEW-EURODRIVE's key principles.

- **MODEL 231**

We adopted the **Organization, Management and Control Model** (so-called **Model 231**) as the basis of our Governance system, with the aim of guaranteeing the correctness and transparency of company activities.

Industrial Innovation Lab

SEW-EURODRIVE Italia and **Università LUM**
created

Industrial Innovation Lab

A lab to contribute to the transformation of **small and medium-sized companies** on the Italian territory, into **agile, innovative and sustainable organizations**.



Industrial Innovation Lab

Sustainability: The Green Side of Drive



- The three pillars of sustainability – **ENVIRONMENT, SOCIETY AND ECONOMY** – form the basis of our business activities. All three areas are reflected in another characteristic: **QUALITY**, which translates for example in the cradle-to-cradle approach in product design, to guarantee maximum longevity.



- From 2021 SEW-EURODRIVE Italy draws up its own **Sustainability Report: The Green Side of Drive.**



Corporate Social Responsibility



The path towards sustainability is also expressed in the social sphere through its **CORPORATE SOCIAL RESPONSIBILITY**.

- With the aim of creating a more inclusive job market, we have undertaken a path dedicated to **gender equality** and **inclusion**. We support **Girls Code it Better**, a large school project of digital creativity and entrepreneurship against the gender gap in Italy.
- SEW-EURODRIVE is partner of **Universities** and **Business Schools** and supports **highly specialized technical training** in the area.



Always by your side



As **specialists in drive technologies**, we offer our customers a wide **range of services**, from engineering to plant start-up and maintenance:

- SEWy Chatbot
- Phone and e-mail support
- Lean Smart Factory consulting
- AGV Basic specific training
- Training
- Online support
- Customized inquiries and order management
- Digital services via QR-Code
- Blog

Our services

- **Online Support**
our web-based portal Online Support is at your disposal for requests for offers and orders, technical data, support, software or documentation in real time.
- **Freephone number 800.909.600:** A single phone number for all needs!

SEW Help: the same number is also available for emergencies during weekends with the free telephone technical assistance service.



Certified Dealer & Service Partner



SEW-EURODRIVE Certified Dealer: a qualified and reliable network of certified authorized distributors to support small and medium-sized businesses with greater efficiency and speed in their automation projects.

SEW-EURODRIVE Service Partner: a network of authorized Service Partners to support machine and system users with all maintenance, technical assistance, and original spare parts needs with even greater speed and flexibility.



Drive Academy: complete and customized training

A **complete and customized training**, both in-person and remotely, to enable you to learn about the functionality, installation and maintenance of drive and control systems:

- **Digital learning**
- **Industry Webinars**, on automation technologies, engineering software, Service activities
- *Webinars with customers*
- *Technical **tutorials** on products, MOVI-C® and on software solutions*
- *Online tutorials on Online Support functions*



A world of insights

Stay tuned for updates!

The SEW-EURODRIVE **information channels** on:

- New products
- New customized technological solutions
- Trends on main Industries
- Success stories with our customers

The **news** and **press** sections of our **website** and our **social media channels** offer constant updates on initiatives and news of the company.



Information and contacts



MILANO

Via Bernini,12
20033 Solaro (MI)

BOLOGNA

Via della Grafica, 47
40064 Ozzano dell'Emilia (BO)

For further information, Online Support, technical details and documentation:

www.sew-eurodrive.it

CASERTA

Area Sviluppo Industriale Teverola,
Str. Consortile
81032 Carinaro (CE)

VERONA

Via Antonio Meucci, 5B
37042 Caldiero (VR)

Follow us on:



[Facebook](#)



[Instagram](#)



[YouTube](#)



[LinkedIn](#)



[X](#)

TORINO

Corso Unione Sovietica, 612/15
10135 Torino

PESCARA

Viale Europa, 147
65010 Villa Raspa di Spoltore (PE)

Toll free number 800.909.600

Headquarters in Solaro (MI)

SEW-EURODRIVE

PORTFOLIO SOLUTIONS HIGHLIGHTS

A series of white decorative lines on a dark blue background. A long, thin line starts on the left, curves downwards, and then continues horizontally across the middle of the page. Below it, a shorter horizontal line is centered. At the bottom, two more horizontal lines are positioned, one on the left and one on the right, with a gap between them.

Driving the world

Overview



TECHNOLOGIES



SOLUTIONS



PORTFOLIO



**APPLICATION EXPERTISE
BY SECTOR**



LEAN SMART FACTORY



SERVICE

The Future of Automation: our technological solutions



MOVIE-C® Modular and connected automation platform.

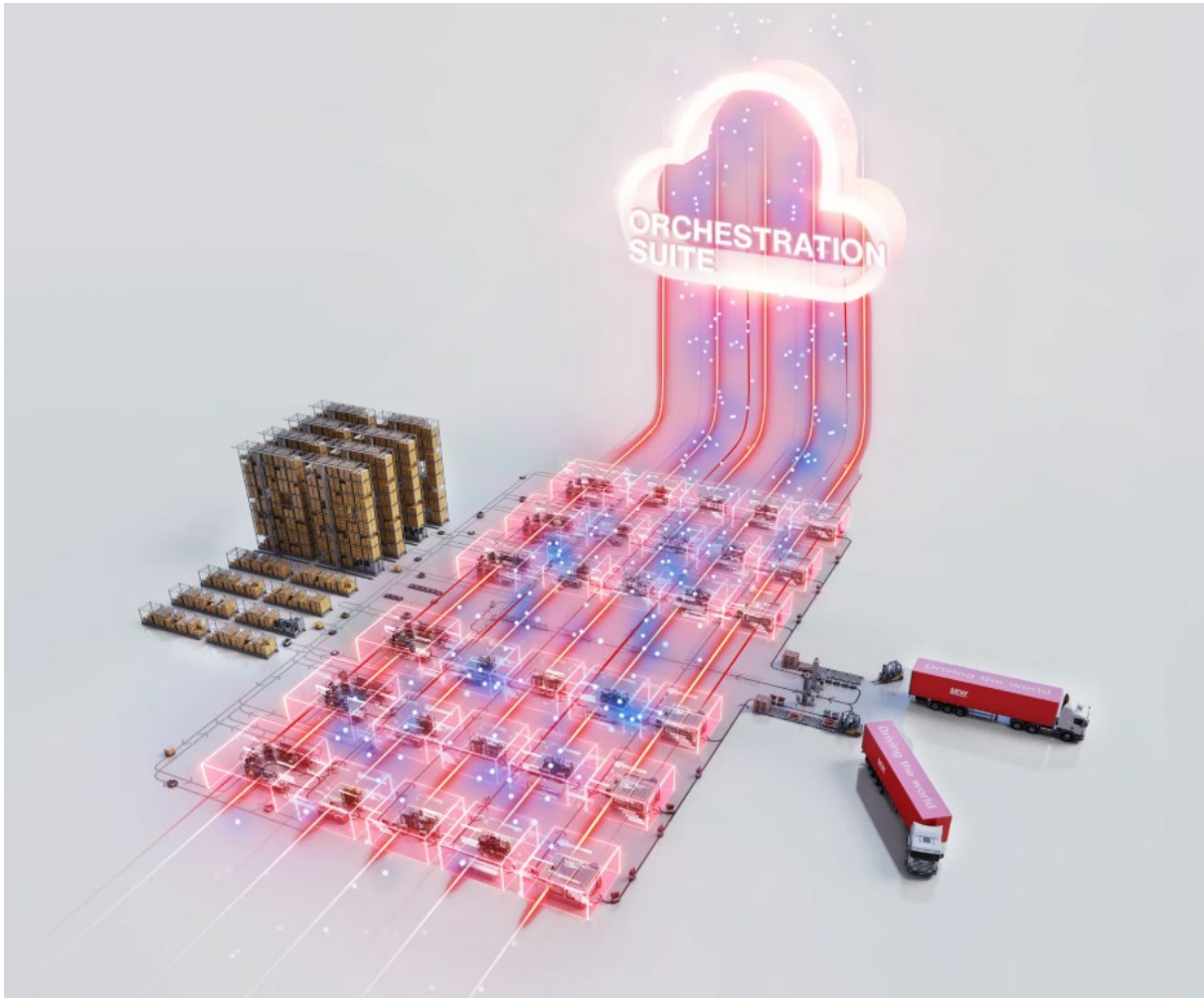
More flexibility. Better performance.

A digitized solution for machine automation.

It is a complete, flexible and connected modular system consisting of several modules:

- MOVIE-C® CONTROLLER technology for real added value in motion control
- MOVIDRIVE® modular/system inverter technology for motor management
- Decentralized drive technology to support a wide range of applications
- Gear units, servomotors and asynchronous motors that SEW-EURODRIVE provides with a wide range of easily configurable models
- MOVISUITE® engineering software and parameterizable MOVIKIT® software modules for performing simple drive functions and complex motion control functions
- MOVILINK® DDI digital motor interface that transmits performance, brake and diagnostic data from the inverter to the motor via a single coaxial digital hybrid cable

OrchestrationSuite



OrchestrationSuite is an advanced, cloud-based, vendor-independent solution for **centralized automation management of industrial automation software**.

It implements the most modern IT methodologies in the OT environment, ensuring high security standards and maximum transparency.

OrchestrationSuite by SEW-EURODRIVE solves complexity with a web-based platform for managing, versioning, and protecting automation software.

DriveRadar®: Flexibility-as-a-Service



System solutions within servitization are strongly focused on **increasing productivity**, and to **support the work of operators**. **Smart Maintenance** plays a key role to this for the Software Defined Factory approach.

DriveRadar® is the proposal by SEW-EURODRIVE for a global digital representation of drive components and system solutions, to provide customers with more in-depth knowledge of drive components, system solutions and processes.

Power and Energy Solutions (PE-S) for energy efficiency in the Smart Factory



All-in-One-energy supply

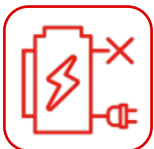
One system, all voltages:

- Drives: 400-800V
- LV-Drives: 48V
- Cabinet: 24V
- Charging stations: $\geq 500V$



Reduction of power peaks

High power peaks from small grid connections.
Flexibility of the grid to different absorptions.



Energy recovery

Regenerated energy stays in the system.
Intelligent energy utilization without braking resistors and grid recovery.



Distribution network in industrial environments

Independence of supply voltages and frequencies.
Compatibility with DC grids and renewable energy.



High system availability

Cabinet power supply with built-in emergency power supply (UPS) without additional batteries.



Energy management

Collection and management of all data according to ISO 50001, both network and system.



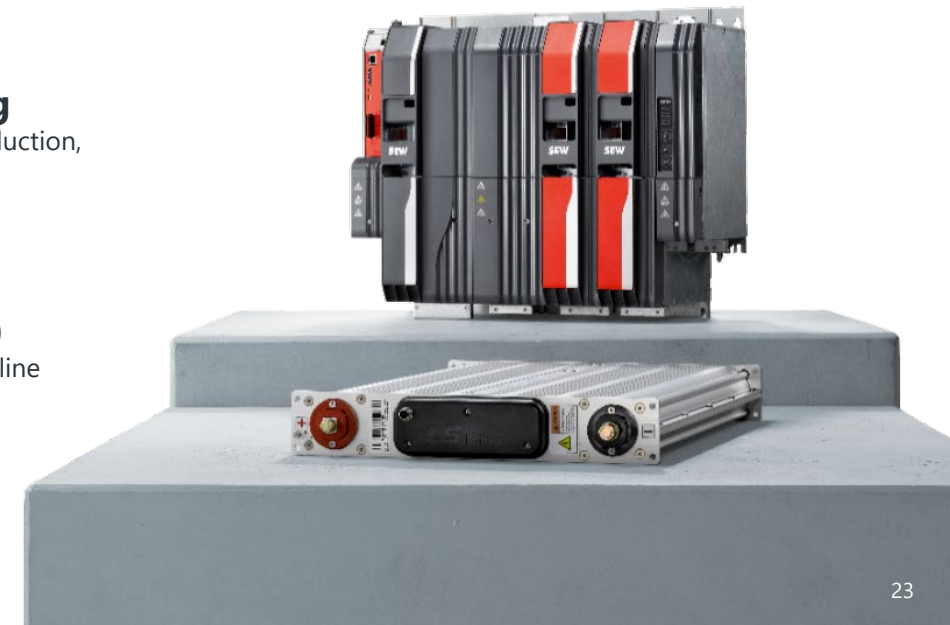
Online Monitoring

Statistical data of use, production, and management.



Regulations (EMC)

Harmonics, energy quality, line reaction.





Factory Automation

- Product components and mobile vehicles
- Process modules for logistics and assembly
- Networked factory system solutions
- Industry 4.0 Services



Machine Automation

- Drive and automation technology
- Engineering Software
- Mechatronic solutions



Automotive Industry

- Electric monorail conveyor
- Thrust platform
- Shuttle / Floor Track
- Skillet



Our experience in the industry

- AUTOMOTIVE
- CONSUMER GOODS
- WAREHOUSE LOGISTICS
- HEAVY INDUSTRIES
- PHARMA

SEW-EURODRIVE is a global partner in the design of automation systems for all **main industry sectors**, granting:

- ✓ **Productivity**
- ✓ **Time-to-market**
- ✓ **Reduction of consumption and emissions**



Smart Assembly

Many of the SEW technologies for intralogistics and assembly have been implemented in Solaro, into in the production processes within the workshop.

The «**Smart Factory**», with assembly islands and production areas connected by 45 Mobile Assistance Systems, cyber-physical systems that communicate at all levels of the production process.



Our services

DISCOVER OUR SERVICES

- **REPAIR program for gearmotors**, which allows to extend the life cycle of SEW gearmotors.
- **OIL CHECK** an oil test with a response within 24/48 hours.
- **MAPPING AND REPAIR SERVICES**
With an **analysis of the installed system supported by SEW-EURODRIVE consultancy**, it is possible to identify the critical components for which it is essential to have a spare part in stock.
- **PICK UP AND DELIVERY SERVICE** Quick collection and control of components thanks to the Pick Up Box.
- **INDUSTRIAL GEAR UNITS REPAIRS**
On-site diagnostics, repair activities at the headquarters SEW-EURODRIVE and final test.



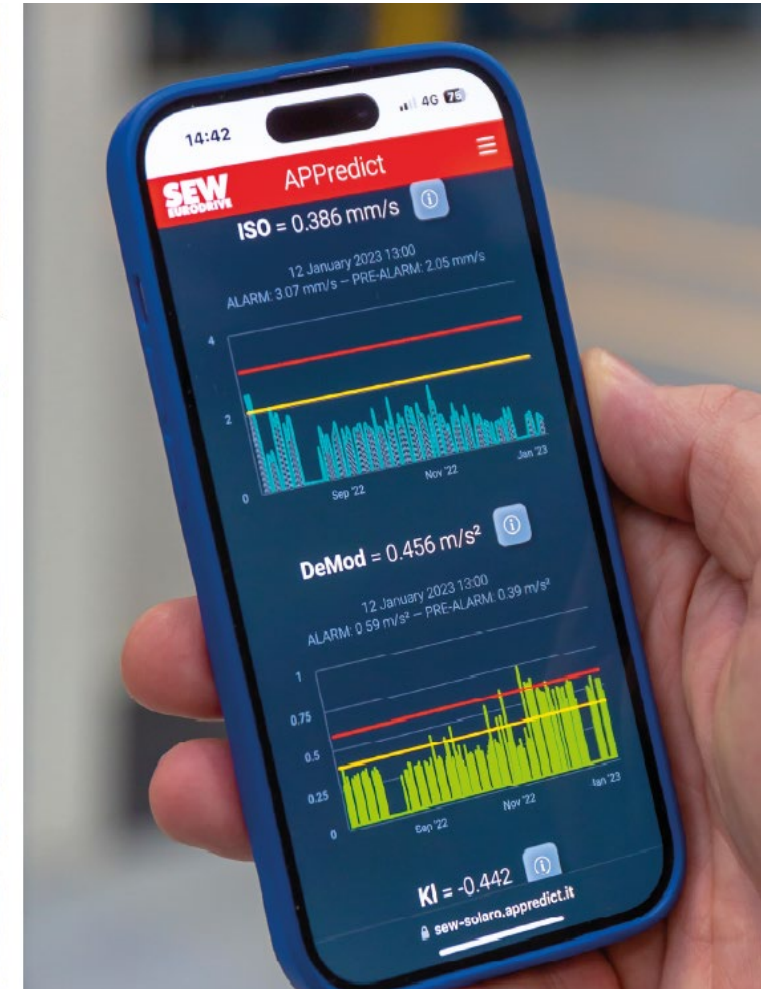
APPredict: the web-based app for predictive maintenance

The **APPredict** solution allows you to **monitor the health and wear of motors and other components, avoid breakdowns and plan maintenance operations** only when necessary, so as to guarantee the continuity of the system.

The **sensors** allow real-time analysis of the data relating to the indicators, for constant and targeted monitoring of the installed system with a simple display of the main parameters: temperature and vibrations, oil status and FFT frequency spectrum.

With **APPredict**, **predictive maintenance becomes increasingly efficient, reliable, smart and sustainable.**

APPredict helps extend the life of machines by reducing failures and optimizing the use of resources.



APPmapp, the web app to improve component management

APPmapp is the innovative web app that uses Artificial Intelligence to identify gearmotors or inverters installed on systems or in warehouses by detecting all the related technical data.



SIMPLE AND FAST

Up to 80 gearmotors or inverters mapped per day for each user, starting from a photo of the nameplate.

Thanks to AI, APPmapp provides a complete and detailed overview of the gearmotors installed on the lines and those in the warehouse. **The system no longer holds any secrets, from the lines to the warehouse:**

- ✓ Identifying identical clusters
- ✓ Calculation of missing spare parts, duplicates and those present in stock but which do not correspond in the factory



Information and contacts



MILANO

Via Bernini,12
20033 Solaro (MI)

BOLOGNA

Via della Grafica, 47
40064 Ozzano dell'Emilia (BO)

For further information, Online Support, technical details and documentation:

www.sew-eurodrive.it

CASERTA

Area Sviluppo Industriale Teverola,
Str. Consortile
81032 Carinaro (CE)

VERONA

Via Antonio Meucci, 5B
37042 Caldiero (VR)

Follow us on:



[Facebook](#)



[Instagram](#)



[YouTube](#)



[LinkedIn](#)



[X](#)

TORINO

Corso Unione Sovietica, 612/15
10135 Torino

PESCARA

Viale Europa, 147
65010 Villa Raspa di Spoltore (PE)

Toll free number 800.909.600

Headquarters in Solaro (MI)