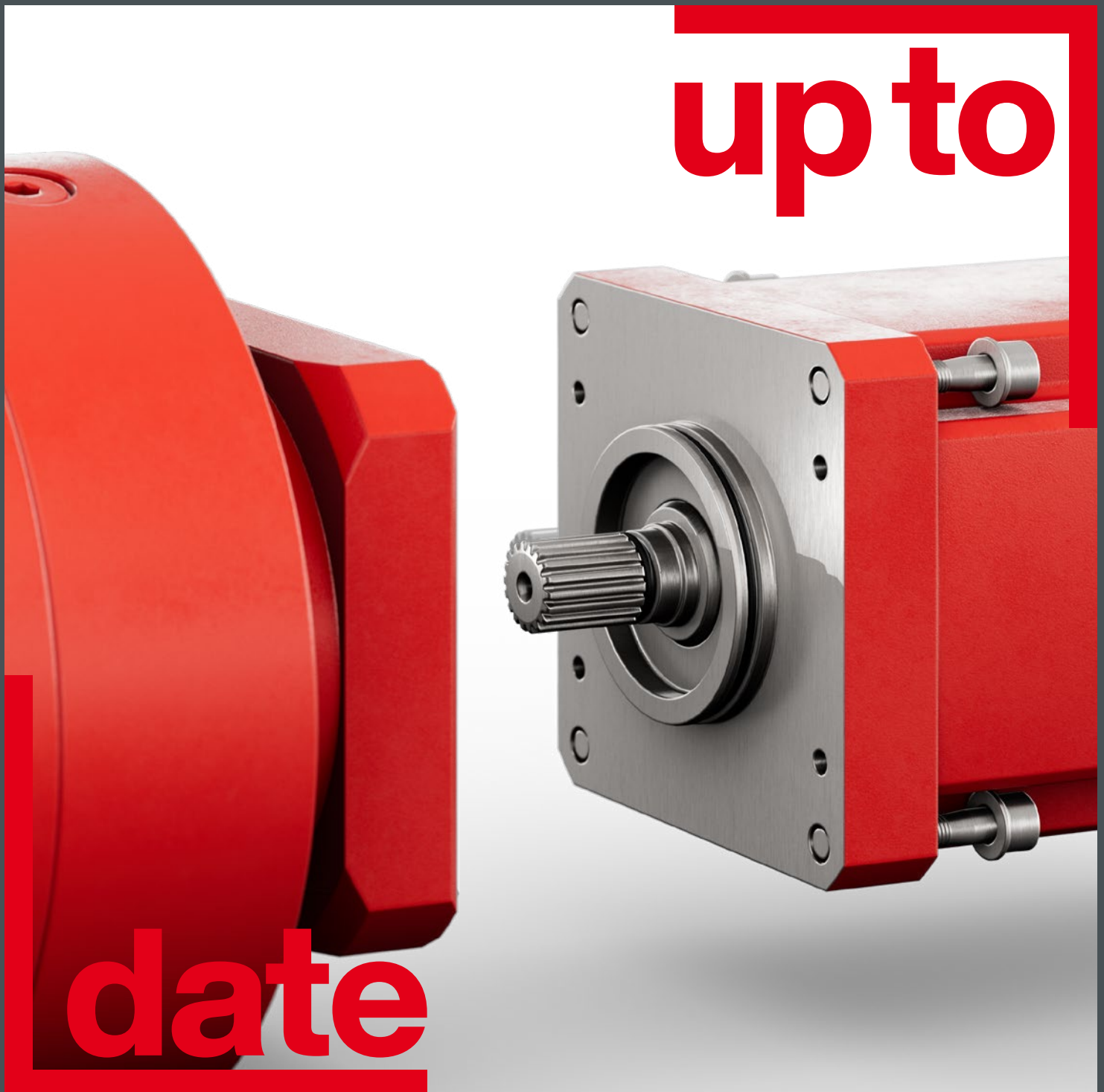


Positively connected

Compact precision:
Gearmotors that set standards

→ 11/2024



up to

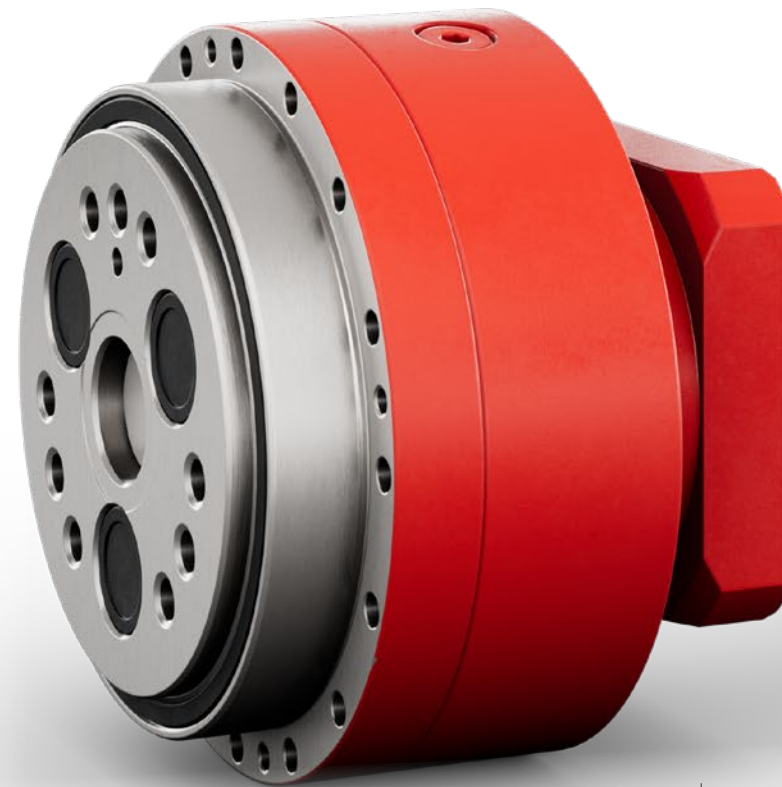
date

Interlocking solution for maximum efficiency

When it comes to the performance and durability of your drives, the connection between the motor and the gear unit plays a key role. With our new compact mounting, we can offer you an interlocking, oil-tight adapter solution that guarantees you maximum safety and flexibility.

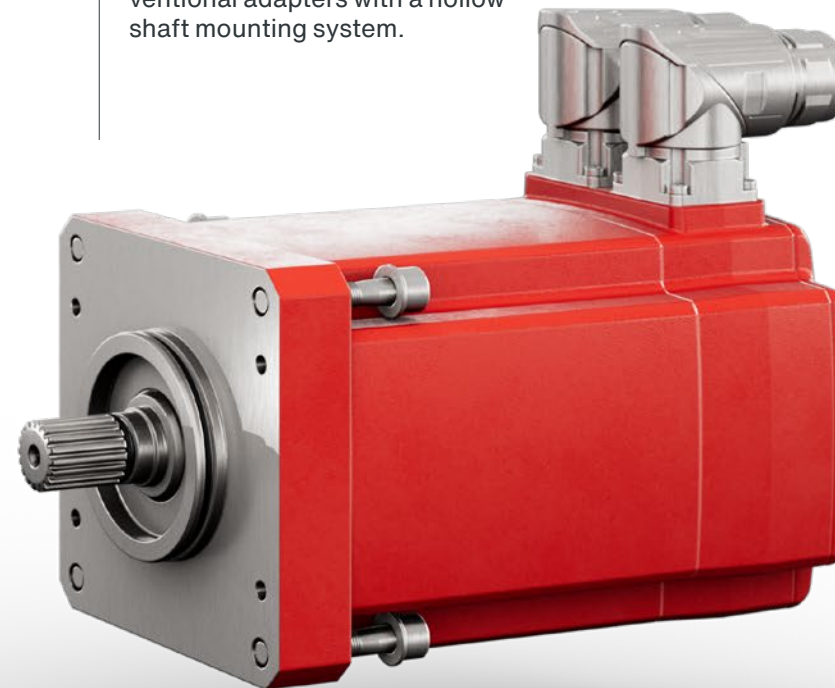
Take advantage of a shorter installation length, lower inertia, and greater safety in the event of overload.

- **Compact**
Saves space thanks to the short installation length, almost like direct mounting
- **Powerful**
Lower inertia for greater efficiency and dynamics
- **Safe**
Enhanced safety in the event of overload thanks to the interlocking connection of the motor and gear unit
- **Interface**
Oil-tight adapter solution



Optimum integration
Developed for highly dynamic servo applications and precise motion sequences, the compact mounting is ideal for mechanical engineering, robotics, materials handling technology, and many other areas of industry.

Easily detachable interface
No more clamping screws – the compact mounting allows for much easier maintenance and disassembly compared to conventional adapters with a hollow shaft mounting system.



Versatile, modular application
Compatible with both PxG® CM3C.. series precision planetary gearmotors and ZN.. CM3C.. series precision cycloidal gearmotors, the compact mounting is a flexible solution for various areas of application.

Three expert tips for optimum use of the compact mounting

- 1 Easy maintenance with minimal downtime**
Take advantage of the modular interfaces of the compact mounting to carry out maintenance work quickly – without having to complete the laborious task of undoing connecting elements.
- 2 Benefits of lower inertia**
Thanks to the low inertia of the compact mounting, you can save energy in highly dynamic applications and boost the responsiveness of your drives.
- 3 Flexibility thanks to the modular concept**
The compact mounting is compatible with existing modular solutions from SEW-EURODRIVE and can be integrated into your PxG® and ZN.. systems with ease. Take advantage of this flexibility and cover various requirements with one solution.

Our compact mounting offers you key benefits – maximum performance combined with minimum space requirements.

For detailed information, please visit our website or get in touch with us directly.



SEW-EURODRIVE GmbH & Co KG
Ernst-Blickle-Str. 42
76646 Bruchsal/Germany
T +49 7251 75-0
F +49 7251 75-1970
sew@sew-eurodrive.com
www.sew-eurodrive.com