



Operation

Examination with an inspection scope

Your requirements

- **Condition monitoring and early detection of damage**
in gear units
- **Targeted fault analysis**
 - In the event of frequent gear unit failures
 - To detect the cause of defective gear unit parts
 - As a follow-up inspection, e.g. after an oil analysis

Our services

- **Examination with an inspection scope**
 - Of the gear unit interior, gearing components, and rolling bearings
 - For wear and damage on the gearing components and rolling bearings, subject to accessibility
- **Visual inspection**
 - For oil leakages and damage to the gear unit
 - Of the lubricant for large-scale impurities (e.g. metal particles, water)
- Photographs to document outsides of gear unit and nameplates
- Production of a service report based on the examination with an inspection scope with regard to any damage and wear potentially found and/or other anomalies
- Documentation of recommended course of action, if applicable (repair, maintenance, etc.)
- Creation of a trend analysis based on a comparison with previous examinations with an inspection scope
- **Optional**
 - Removal of the lubricant currently in the unit
 - Filling with new lubricant as per manufacturer specifications (volume, viscosity, etc.)

Your benefits

- **Targeted troubleshooting** by pinpointing the damage and providing an appropriate recommended course of action
- **Complete transparency** about the condition of the gear unit
- **Trend development in relation to wear** through regular examination with an inspection scope
- **Examination with an inspection scope as a starting point** for ongoing, condition-based maintenance (condition monitoring)



Example findings of an examination with an inspection



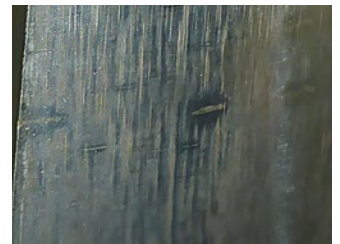
Pitting



Grooves



Gray spots

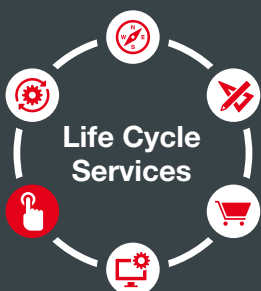


Roll-over

> This may be of interest to you

Supplementary services

- Repair
- Retrofit
- Spare Parts Service
- Oil analysis
- Mobile vibration analysis
- Quick Check
- Thermography
- DriveRadar® IoT Suite for industrial gear units



Examination with an inspection scope is part of Life Cycle Services.

> www.sew-eurodrive.de/en/life-cycle-services/

**SEW
EURODRIVE**

SEW-EURODRIVE GmbH & Co KG
Ernst-Blickle-Str. 42
76646 Bruchsal/Germany
Tel. +49 7251 75-0
Fax +49 7251 75-1970
sew@sew-eurodrive.com

→ www.sew-eurodrive.com