



## Operation

# Thermography

## Your requirements

- **Identification of anomalies** relating to surface temperature
- **Inspection of control cabinets and drive technology** during ongoing production
- **Elimination of outlay associated with requirements arising from standards and legislation**, e.g. training, measuring equipment
- **Prevention of fire and accident risks**
- **Improvement in classification** for fire insurance purposes
- **Trend development of anomalies** thanks to regular thermography

## Our services

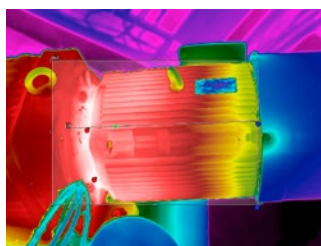
- **Thermographic inspection can be carried out on the following system parts:**
  - Control cabinets, including air-conditioning units and switchgear (contactors, relays, impulse switches, pushbuttons, etc.) according to VDE 0670
  - Electric motors and gear units (hot spots due to bearing damage, insufficient lubrication)
  - Low-voltage, medium-voltage, and high-voltage systems (transformer stations, machine control cabinets, medium-voltage distribution, basic supply systems, compensation systems)
  - Oil, air, and water coolers
- Diagnostics, thermal testing, and identification of anomalies relating to surface temperature (hot spots)
- Visual inspection of the control cabinet in relation to pollution and the function of the fan
- The measurement result readings are checked and documented in line with standards DIN 54191, DIN EN ISO 9712, and parts of DIN EN 16714.
- Creation of a service report and, potentially, necessary recommended courses of action, taking the requirements of VdS 2859 into account

## Your benefits

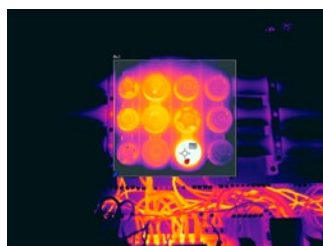
- **Prevention of production downtime**, since measurements are taken during ongoing production
- **Maintenance measures can be planned** if anomalies are found
- **Elimination of outlay** associated with training and measuring equipment
- **Possible reduction in insurance costs** (fire protection insurance)



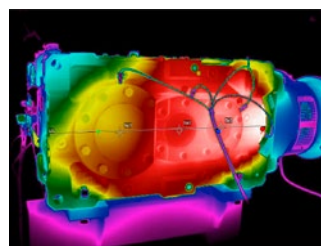
## Examples of issues that can be detected through thermography



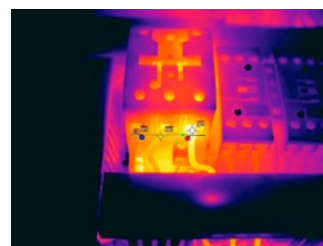
Bearing damage in the motor



Overheating of fuse in control cabinet



Overload of one gear stage in the gear unit

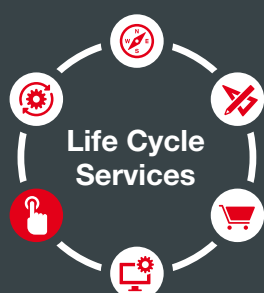


Contactors in the control cabinet with high transition resistance

## > This may be of interest to you

### Supplementary services

- Repair
- Retrofit
- Condition Monitoring
- Examination with an inspection scope
- Mobile vibration analysis
- Quick Check
- Oil analysis



Thermography forms part of our service offering throughout the entire system life cycle.

> [www.sew-eurodrive.de/en/life-cycle-services/](http://www.sew-eurodrive.de/en/life-cycle-services/)

**SEW  
EURODRIVE**

SEW-EURODRIVE GmbH & Co KG  
Ernst-Blickle-Str. 42  
76646 Bruchsal/Germany  
Tel. +49 7251 75-0  
Fax +49 7251 75-1970  
[sew@sew-eurodrive.com](mailto:sew@sew-eurodrive.com)

→ [www.sew-eurodrive.com](http://www.sew-eurodrive.com)