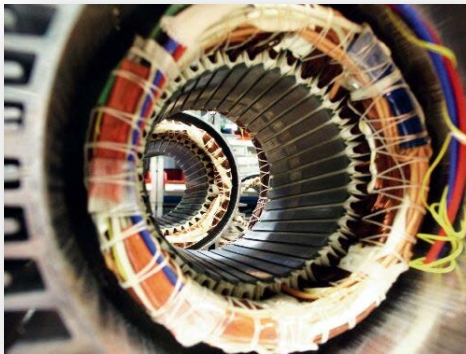


Service and Maintenance – SEW Motor Pinion Replacement



Service and Maintenance – SEW Motor Pinion Replacement

The following presentation will guide you through the safe and proper steps needed to replace a SEW motor pinion –

- Safety
- Required tooling
- Preparing to remove a motor pinion
- Removing a motor pinion
- Preparing to install a motor pinion
- Installing a new motor pinion



Service and Maintenance – SEW Motor Pinion Replacement

Safety First

1. Never perform any work that you are either unqualified for or feel uncomfortable doing
2. Follow all local safety guidelines
3. Never perform work on equipment that is connected to a power source or energized
4. Always use the proper tooling
5. Make use of all required PPE or Personal Protective Equipment



Service and Maintenance –

SEW Motor Pinion Replacement

Required Tooling

Adjustable wrench		Dead blow hammer	
Aqueous cleaner (Degreasing agent)		Various diameter metal pipe	
External circlip pliers		Non-shedding rags	
Hot plate		Loctite 603	
Gear pullers		Heat resistant gloves	
Flat hone stone		Non-shedding brush	

Service and Maintenance – SEW Motor Pinion Replacement

Preparing to remove a motor pinion

Step 1 –

Remove the circlip from the rotor pinion. Take care not to overstretch the circlip.



Service and Maintenance – SEW Motor Pinion Replacement

Preparing to remove a motor pinion

Step 2 –

Inspect the rotor pinion for any burrs or deformations that will inhibit the pinion gear removal process.



Service and Maintenance – SEW Motor Pinion Replacement

Removing the motor pinion

Step 3 –

Attach the gear puller to the pinion gear.

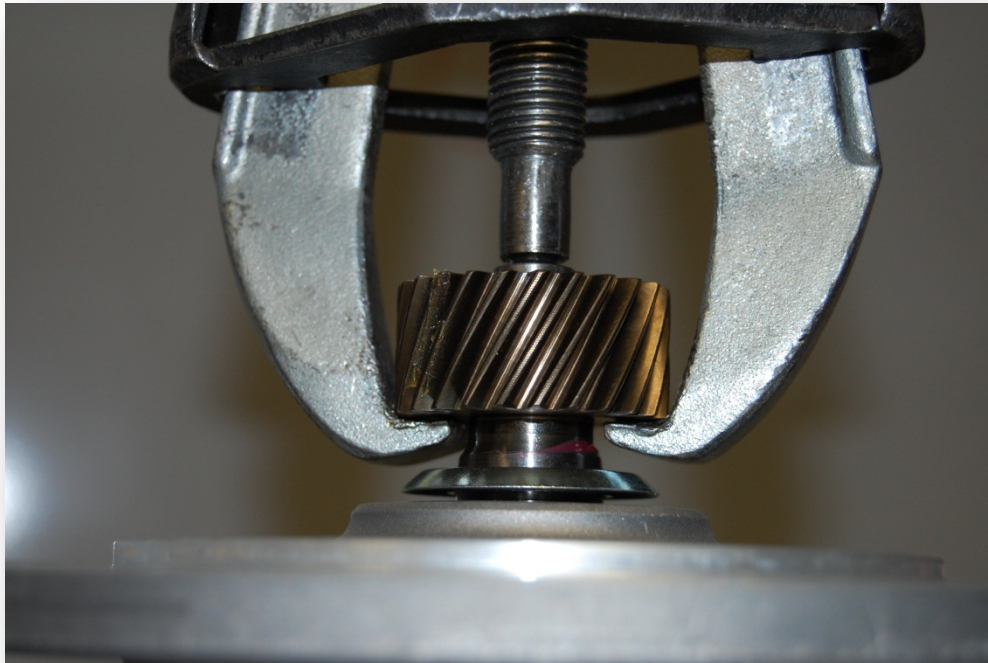


Service and Maintenance – SEW Motor Pinion Replacement

Removing the motor pinion

Step 4 –

Verify that the claws of the gear puller are properly engaged.



Service and Maintenance – SEW Motor Pinion Replacement

Removing the motor pinion

Step 5 –

Rotate the puller spindle with the crescent wrench until the gear pinion has been completely removed from the rotor.



Service and Maintenance –

SEW Motor Pinion Replacement

Preparing to install a motor pinion

Step 6 –

Inspect the pinion and rotor surface for any damage.

- Never reuse damaged parts



Service and Maintenance – SEW Motor Pinion Replacement

Preparing to install a motor pinion

Step 7 –

Remove any burrs with the hone stone.



Service and Maintenance – SEW Motor Pinion Replacement

Preparing to install a motor pinion

Step 8 –

Heat the pinion to approximately 250 °F.
Do not exceed this temperature.



Service and Maintenance – SEW Motor Pinion Replacement

Preparing to install a motor pinion

Step 9 –

Clean the rotor shaft, removing any debris, rust, or grease.



Service and Maintenance – SEW Motor Pinion Replacement

Preparing to install a motor pinion

Step 10 –

Apply a thin coat of Loctite 603 to the rotor shaft and spread it with a brush.

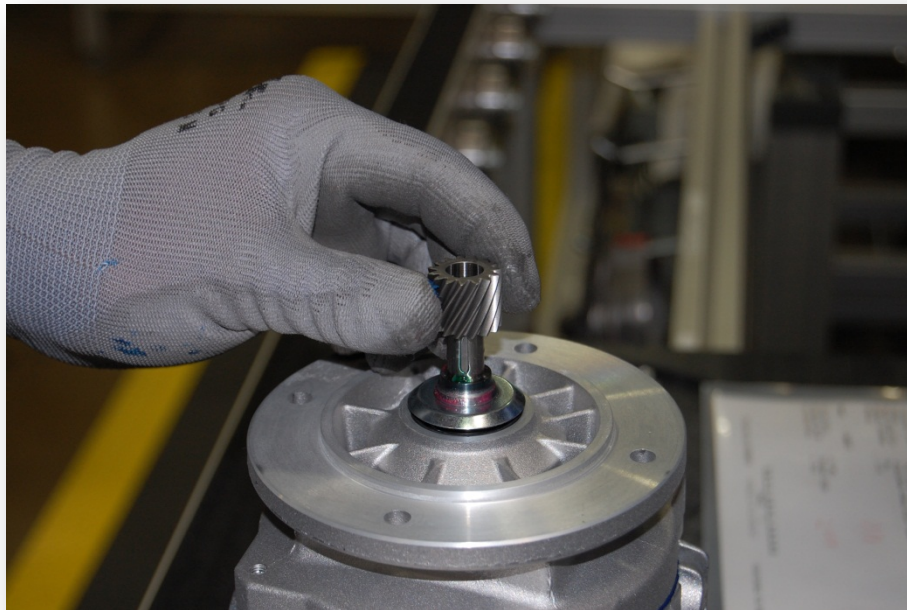


Service and Maintenance – SEW Motor Pinion Replacement

Installing a new motor pinion

Step 11 –

Wearing the proper heat resistant gloves, align the pinion keyway with the rotor key.

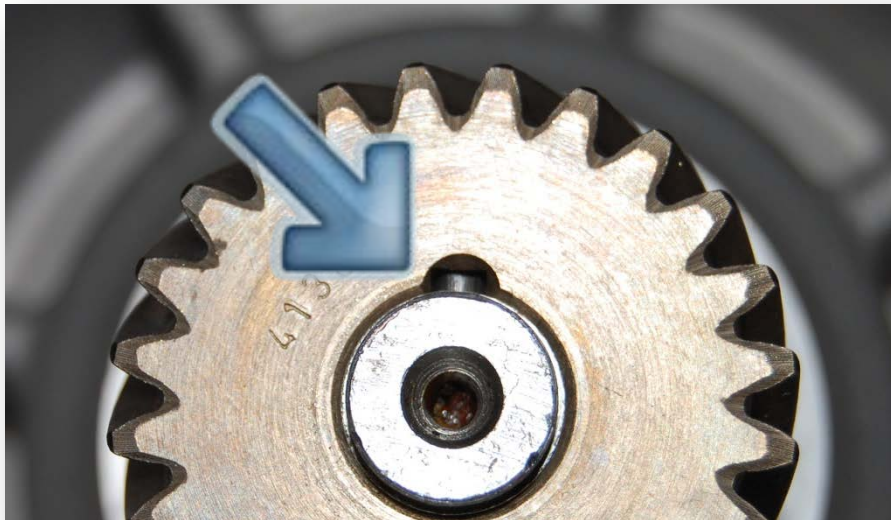


Service and Maintenance – SEW Motor Pinion Replacement

Installing a new motor pinion

Step 12 –

Verify the alignment of the pinion keyway with the rotor key before proceeding further.

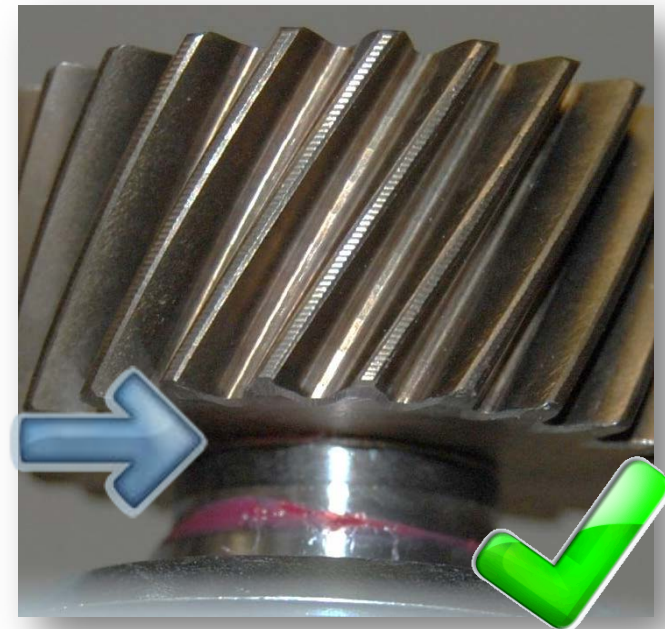


Service and Maintenance – SEW Motor Pinion Replacement

Installing a new motor pinion

Step 13 –

Gently seat the pinion against the rotor shoulder using a dead blow hammer and an appropriately dimensioned pipe.

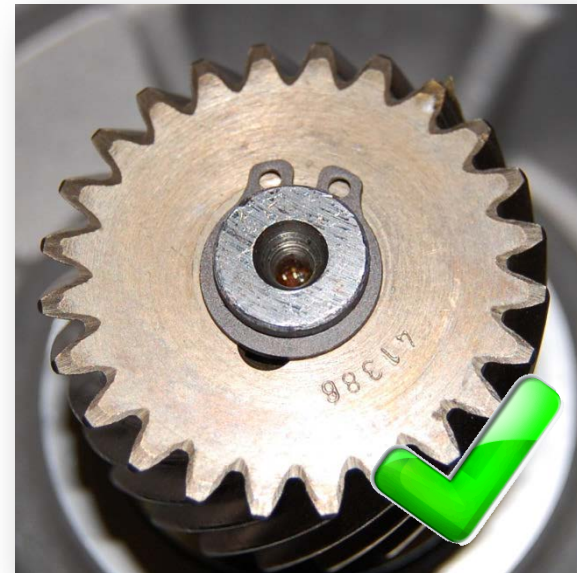
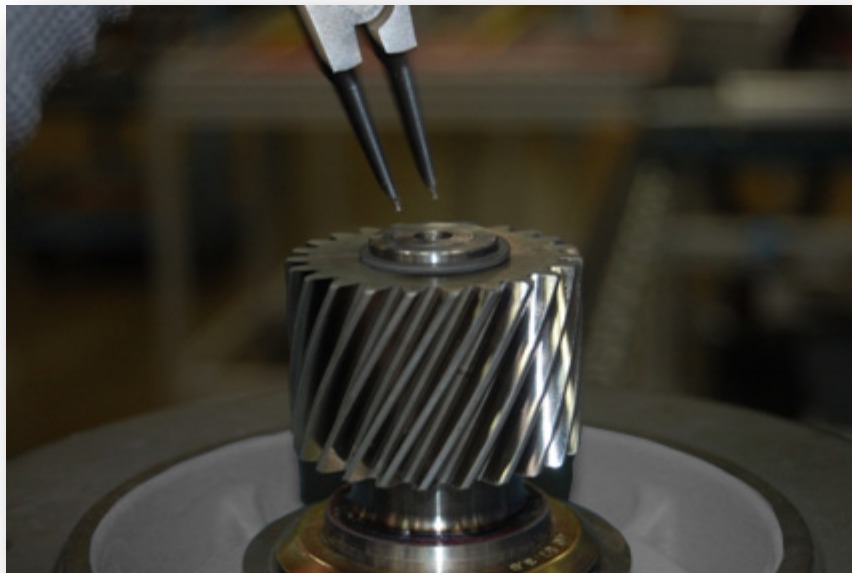


Service and Maintenance – SEW Motor Pinion Replacement

Installing a new motor pinion

Step 14 –

Install the circlip onto the rotor with the open end of the circlip 180 ° from the keyway.



Service and Maintenance – SEW Motor Pinion Replacement

Installing a new motor pinion

Step 15 –

Wipe away any excess Loctite 603 that may have splattered during installation.



Service and Maintenance – SEW Motor Pinion Replacement

Installing a new motor pinion

Step 16 –

The motor is now ready for installation into the gear reducer.



Service and Maintenance – SEW Motor Pinion Replacement

For more information on other service and maintenance topics, please visit our website:

www.seweurodrive.com/service/index.php5

